

EDGE

SOLAR STRIP LIGHT

USER GUIDE



Ensure your solar panel is South facing or as near as possible



Clean your solar panel from time to time



Do NOT place your solar panel in shaded areas.



Do NOT charge behind glass

Thank you for choosing the Edge Solar Strip Light. Please read these instructions carefully before using your light.

Important notes

Always take care when installing your light. If you are at all unsure, please contact your retailer or a professional trades person for advice.

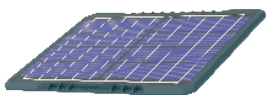
Installation Information

Remove all packaging and put to one side. Please carefully consider where you wish to install your light before making alterations to your property. It's particularly important that the solar panel receives as much sunlight as possible. Ensure that it is not obstructed by buildings, fences, trees, sheds, etc., or the shadows that these create. **If the solar panel is installed in a poor location, it may not perform to the best of its ability.**

To maximise the battery capacity, the light should be charged in direct sunlight for at least 6 hours, where possible, before being used for the first time. Failure to do so can shorten the battery life or performance of the light.

The light will turn ON/OFF automatically when left in the on position. Please note it is completely normal for the light to come on at different times as it depends on how fast it charges in it's location.

Box Contents



1 Solar panel



2 LED strip



3 Connecting rod



4 Spike



5 Accessories

How to use

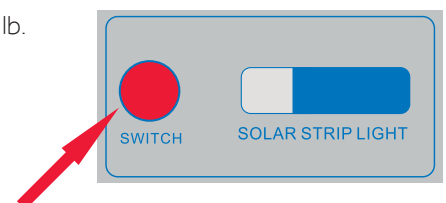
You will locate the ON/OFF switch on the underside of the light fitting, next to the light bulb.

1st Press: Turn ON

2nd Press: Flash mode

3rd Press: Breathing mode

Long Press for 2 seconds: Turn OFF

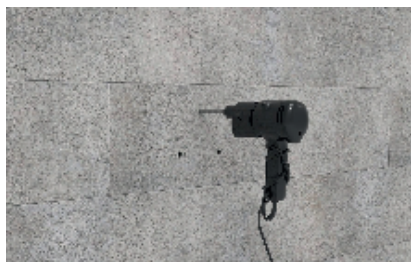


Connect the solar panel

1. Connect the LED strip and solar panel together.
2. Press the 'SWITCH' button.
3. Covering the solar panel with a cloth, the strip will be ON. Remove the cloth and the strip should turn OFF and the indicator light will flash regularly. This means the solar panel is connected and you can proceed to the next steps.



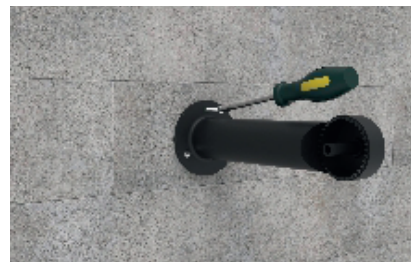
Wall Mount Installation



1. Drill hole where required



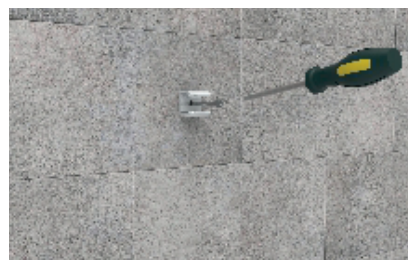
2. Insert the plastic wall plug



3. Fix the connecting rod with screws



4. Fix the solar panel and connecting rod



5. Fasten the strip clips to the wall



6. Peel off the 3M tape and paste the strip onto the wall



7. Clip in LED strip

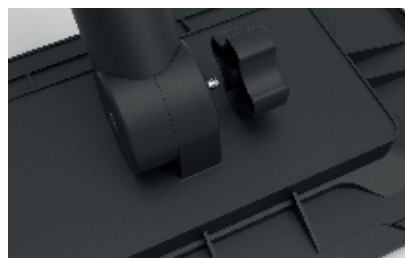


8. Connect the cables



9. Press the switch button to turn on the strip (Indicator light will flash regularly)

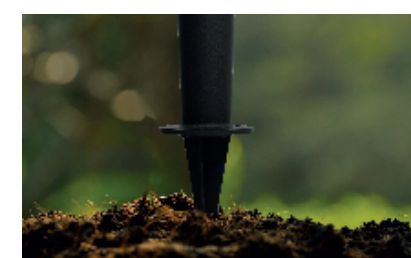
Ground Installation



1. Fix the solar panel and connecting rod



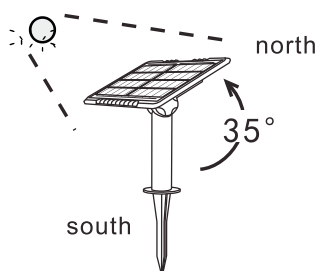
2. Plug the spike into the connecting rod



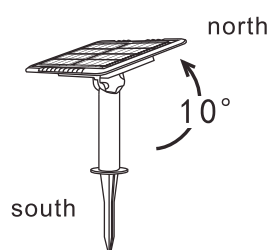
3. Insert directly into the ground to complete the installation

Solar Panel Installation

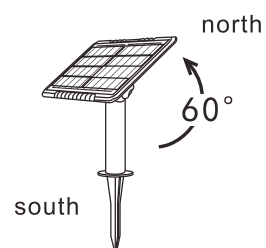
Make sure the solar panels are installed at the correct angle and it will not be blocked by any obstacles.



100% charging efficiency



75% charging efficiency



50% charging efficiency



Troubleshooting

Please ensure that there are no nearby light sources shining on the solar panel after dark. These could be bright indoor/outdoor lights from your property or neighbours, or street lights.

If you are unsure, take the light inside and test it in a dark room indoors.

If you are encountering any problems with your light, often you can resolve this yourself by following our troubleshooting guide. If the light has its solar panel in a poor location it will struggle to work, but that doesn't mean there is a fault with the unit. Please remember that the light will arrive with some charge and will likely work for a few days even if the solar panel is poorly located. Please try the troubleshooting tips below before contacting your retailer:

Recharge Procedure

1. Double check the location of your solar panel to ensure it is in a clear location and as South facing as possible.
2. Turn the light off at the switch and leave it to recharge for 3-5 days ensuring one sunny day has passed.
3. After 3-5 days return to the light and turn it back on at the switch.
4. If your light still does not illuminate after dark, please contact your retailer.

Maintenance

Clean the surface of the solar panel and light lens with a soft, slightly moistened cloth. Do not use corrosive cleansing agents or chemical solutions as these may damage surfaces and impair operation. Keep the solar panel free of dirt, debris and snow.

Safety Instructions

The Solar Centre assumes no liability for any damage resulting from the use of this product, nor do we assume liability for any damage to property or personal injury caused by improper use or failure to observe these instructions.

Unauthorised conversion and/or modification of the unit may be dangerous and will invalidate your warranty. To avoid damage to sight, do not look directly at the light source. This device is not a toy and should be kept out of reach of children. Do not submerge the device in water or expose it to extreme temperatures (less than -25°C or higher than 50°C).

EDGE SOLAR STRIP LIGHT - WARM WHITE 240 LEDS
MODEL NUMBER: SC2331

EDGE SOLAR STRIP LIGHT - WARM WHITE 480 LEDS
MODEL NUMBER: SC2332

EDGE SOLAR STRIP LIGHT - WARM WHITE 960 LEDS
MODEL NUMBER: SC2333

SOLARCENRE®
44-46 COLDHARBOUR LANE
HARPENDEN
HERTFORDSHIRE
AL5 4UN

WWW.SOLARCENRE.CO.UK

